

## O2 Food ERP



Escape Velocity Systems

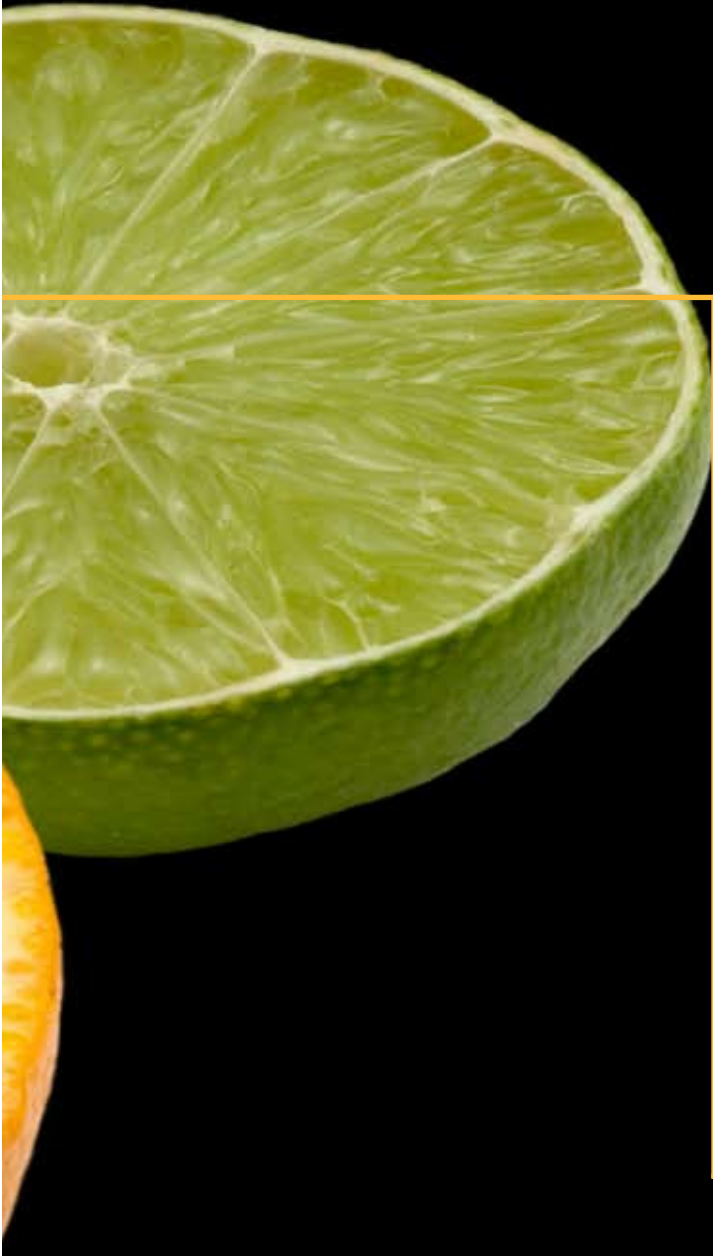
*“It was difficult for us to handle and report on costs before O2 Food ERP. Each batch size was a different bill of material, meaning we’d have to total costs across several bills to find out what it costs us to produce a sugar cookie. With O2 Food ERP’s industry-specific process manufacturing functionality combined with the strong accounting and financials of Sage MAS 500, we’ve got an ideal, no-compromise solution—designed to work the way we work.”*

*- Controller  
Sweet Life Enterprises*



*Elevate* Performance,  
Productivity & Profitability  
with

# *O2 Food ERP*



Modern food and beverage manufacturers develop palatable creations while adhering to strict quality and safety requirements. Food and beverage manufacturers are also serious businesses competing in an environment filled with risk and uncertainty. With extremely volatile commodity and transportation costs and ever-increasing demands from customers they require a level of operational visibility that not only includes current data, but gives a glimpse of the future. As a food and beverage manufacturer grows and expands, manual, paper, and spreadsheet-driven processes don't meet the information needs of the many departments and functions. Fortunately there is a solution. O2 Food ERP is a complete enterprise management solution tailor-made for growing food and beverage manufacturers. O2 Food ERP's industry-specific feature set, based on MAS 500 helps food and beverage manufacturers manage their entire operations with insight; the competitive advantage that can make the difference between surviving and thriving.




## *Food & Beverage Industry Business Issues*

### **Focused on Industry Challenges**

Competition, highly variable material costs, regulatory requirements and quality management are key challenges to a food and beverage manufacturer's profitability. To succeed, you need clear, accurate and timely visibility across your whole enterprise; from sales and production to purchasing and inventory control. Real-time access to information from all corners of your organization will help you keep your finger on the pulse of your company.

Escape Velocity Systems understands the needs of food and beverage manufacturers are unique and require a great understanding of customer demands, quality and regulatory requirements, and good manufacturing practices (cGMP). Inherent in the O2 Food ERP is an understanding that comes from years of industry expertise developing tools and real solutions that have helped food and beverage manufacturers realize a competitive advantage.

Where you are today, where you're going tomorrow, Escape Velocity Systems is uncompromising in its commitment to be your business partner for life.



*"Improving integration between applications is one of the top priorities for organizations today."*

*- Forrester survey of more than 600 technology decision makers and enterprises across North America*

## *Costs, Profitability, & Customer Satisfaction*

- “What-if” Cost Analysis
- Sales Forecasting & Inventory Requirements Planning
- Flexible Customer Pricing

Managing costs, profits and customer satisfaction is a continuing challenge for food and beverage manufacturers; the O2 Food ERP helps you manage and continually address these challenges.

Low margins and often highly fluctuating material costs make managing profitability a must for food and beverage manufacturers. O2 Food ERP offers real-time cost data helping you track material costs (including intermediates), labor, packaging and finished goods. In addition, “What-if” cost-analysis to help make pricing decisions easier, improve your bottom-line with better visibility throughout the entire budget, pricing, and analysis process.

Customer/product price tiers and promotional pricing can be difficult for growing food and beverage manufacturers. Let O2 Food ERP reduce the difficulty of pricing tiers, rebates and promotions by allowing you to better manage pricing at all levels including; customer, product, region, and calendar. Gain real insight into your food and beverage profitability and identify variances quickly.



*“The O2 Food ERP has allowed our company to migrate to a total ERP solution; a flexible application that encompasses our entire organization. Our implementation team was knowledgeable about bakeries and our specific issues making the process much easier and effective. We are pleased to have EVS as a business partner.”*

*- Dennis R. Marcucci  
Information Systems Director  
Gonnella Frozen Products*



## *Production Efficiency & Inventory Management*

- Inventory forecasting
- Certificate of Analysis tracking (C of A)
- Multiple Unit of Measure Calculations and Batch Sizing
- Capacity Resource Scheduling
- Graphical inventory dashboards

Daily challenges of a food and beverage manufacturer are numerous and complex; with ever changing production planning, operational capacity scheduling, product expiration dates, batch yields and ingredient variability.

O2 Food ERP understands the complex and unique inventory requirements of a food and beverage manufacturer. Effective inventory management requires an ability to forecast product demand and inventory levels, to notify of product expiration, to manage product and ingredient specifications, quality control status and vendor certificates of analysis (C of A). To make the inventory management even more efficient, O2 Food ERP provides Business Intelligence tools for powerful, flexible and graphical management reporting.

The O2 Food ERP operates the way you do and offers robust tools to help manage your operations. O2 Food ERP helps food and beverage manufacturers maximize R&D and production efficiency with multiple unit of measure calculations. Production line constraints are typically bottle-necks in any food and beverage manufacturing environment; O2 Food ERP provides finite capacity scheduling to optimize production schedule based capacities and constraints of your plant.



*“Companies must ensure that existing policies and procedures are established, understood and practiced before they can begin to tackle the modernization of the GMPs and future demands from regulators and customers.”*

*- Lance Reeve  
Director of Food Security  
AIB International*

## *Food Safety, Compliance, & Quality Control*

- Formula Security & Management
- Cradle to Grave Lot Tracking
- Nutritional Calculations & Reporting

Customers, regulatory agencies and distribution partners insist on high product and delivery standards from your company. The O2 Food ERP was developed to easily satisfy the high standards you require.

Too often food and beverage manufacturers maintain information in multiple locations (or “islands”); i.e. recipes in Excel, quality control tests in Access, production scheduling on a white board, and nutritional labeling in a third party application. This separation of information requires significant and error prone manual tasks and limits communication between the “islands.” How does a recipe change affect product labeling? If QC determines a product to be sub-standard, how does purchasing and production know in real-time? The O2 Food ERP was developed to centralize information from all aspects of your organization and provide real-time information to all functions of your company.



# O2 Food ERP Solution

## Quality Control

With the Quality Control Module you can define a battery of tests to perform for purchased materials or manufactured products and set the acceptable range for the tests. If a test fails, the lot can be placed on hold. A “work queue” can be used to help alert quality control personnel of products which need to be tested and automatically generate a test schedule for production batches.

## Auditing & Security

O2 Food ERP provides the necessary tools and facilitates compliance with government auditing and security regulations, including the Sarbanes-Oxley and the FDA 21 CFR Part 11b. There are many systems that can process your data, O2 Food ERP goes one step further by helping you validate and audit your data.

## Royalties & Rebates

The Royalties/Rebates Module provides the ability to automate royalties, rebates, field development, slotting fees, customer refunds or any other paid fee based on O2 Food ERP orders. O2 Food ERP customers can set up relationships between items, vendors, and customers in one maintenance screen. The end result is to create an automated payable transaction to the vendor. This eliminates the need for “offline” spreadsheets to calculate what is owed to vendors and saves significant time at period-end.

## Formulas/Recipe Management

O2 Food ERP combines powerful formulation and analysis with formula management capabilities such as formula group security and an R & D notebook. The formulation module takes full advantage of the strong physical property module. With O2 Food

ERP, you can formulate to multiple specifications, performing many complex calculations quickly and accurately, eliminating the need for complex and mistake-prone spreadsheets.

## Production

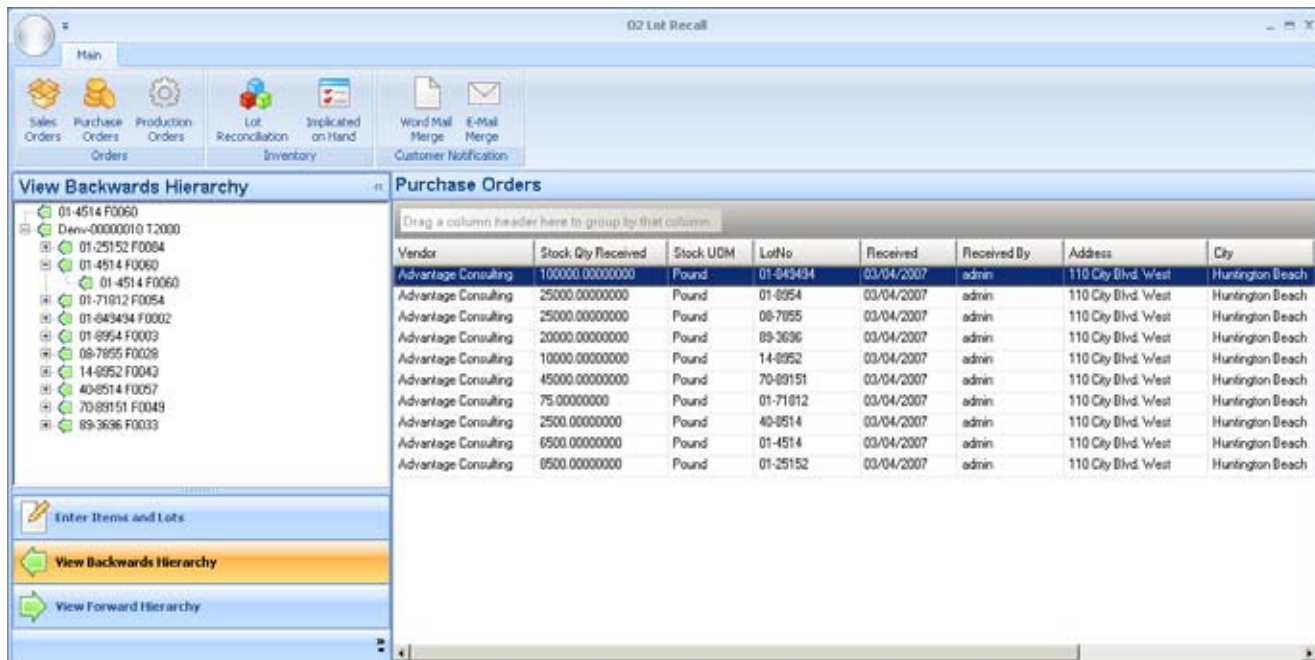
The Production Module provides powerful operational and analytic tools to help process manufacturers maximize efficiency and intuitively analyze historical operations. Whether you produce complete batches, require finished goods to ship before a batch is closed or operate in a “continuous flow” environment, O2 Food ERP can easily facilitate your manufacturing method. The “Active Role Interface” is a completely customizable workbench which provides a powerful tool to manage your operational schedule.

## Cost Set Scenarios

The Cost Set Scenarios module for O2 Food ERP allows users to perform “what-if” analysis on raw material costs then see their effect on the cost of finished goods and intermediates. With each scenario, the expected impact of the cost change on finished goods can be determined. Simplify the entry process by utilizing a linked Excel spreadsheet. When done, simply click “import” and your cost set will be updated in O2 Food ERP. The Cost Set Scenarios module can also be utilized to roll up costs to other inventory buckets such as replacement cost and landed cost.

## Compliance Reporting

For many process manufacturers, compliance reporting such as MSDS are a legal requirement. The Compliance Reporting module is a dynamic reporting solution designed for the complex demands of your organizations federally regulated requirements. With the Compliance Reporting module, you will save time and money by enabling your organization to quickly and accurately generate compliance reports, streamlining the compliance reporting process, eliminating duplication of entry and maintaining a seamless workflow.



## Advanced Planning & Scheduling

Advanced Planning & Scheduling Module has the ability to take an unlimited number of constraints into account and automatically alert planners to any violation. The Microsoft.Net architecture allows for easy addition of custom constraints unique to your business for production of schedules that respect your real-world requirements. The result is maximum production output, reduced time lost to cleanouts and a planning process that is easy to manage.

## EDI

O2 Food ERP offers more than just EDI integration software or network services. A modular approach enables O2 Food ERP to provide a comprehensive yet flexible EDI solution that delivers unparalleled scalability.

## Nutritional Database & Labeling

The Nutritional Database & Labeling Module completely integrates with the USDA's National Nutrient Database for Standard Reference. This data is the foundation of most food and nutrition databases in the US, used in food policy, research and nutrition monitoring as the US national standard. The FDA's regulations meet the provisions of the Nutrition Labeling and Education Act of 1990 (NLEA), which, among other things, requires the FDA to make nutrition labeling mandatory for almost all processed foods.

Using the extensible O2 Food ERP framework, nutritional data is included with the raw material items, easily creating nutritional labels, ingredient statements, allergen declarations and nutrient content.

## Route Sell

Route Sell is a comprehensive sales force automation and productivity tool designed specifically for distributed goods industries. Extending the order entry, pricing and inventory databases to the field utilizing PDAs, tablets or notebook mobile devices dramatically increases sales force productivity. Database synchronization with O2 Food ERP can be accomplished on a near real-time basis with cellular wireless or in batch mode across WAN, LAN, WiFi, Internet and dial-up modem.

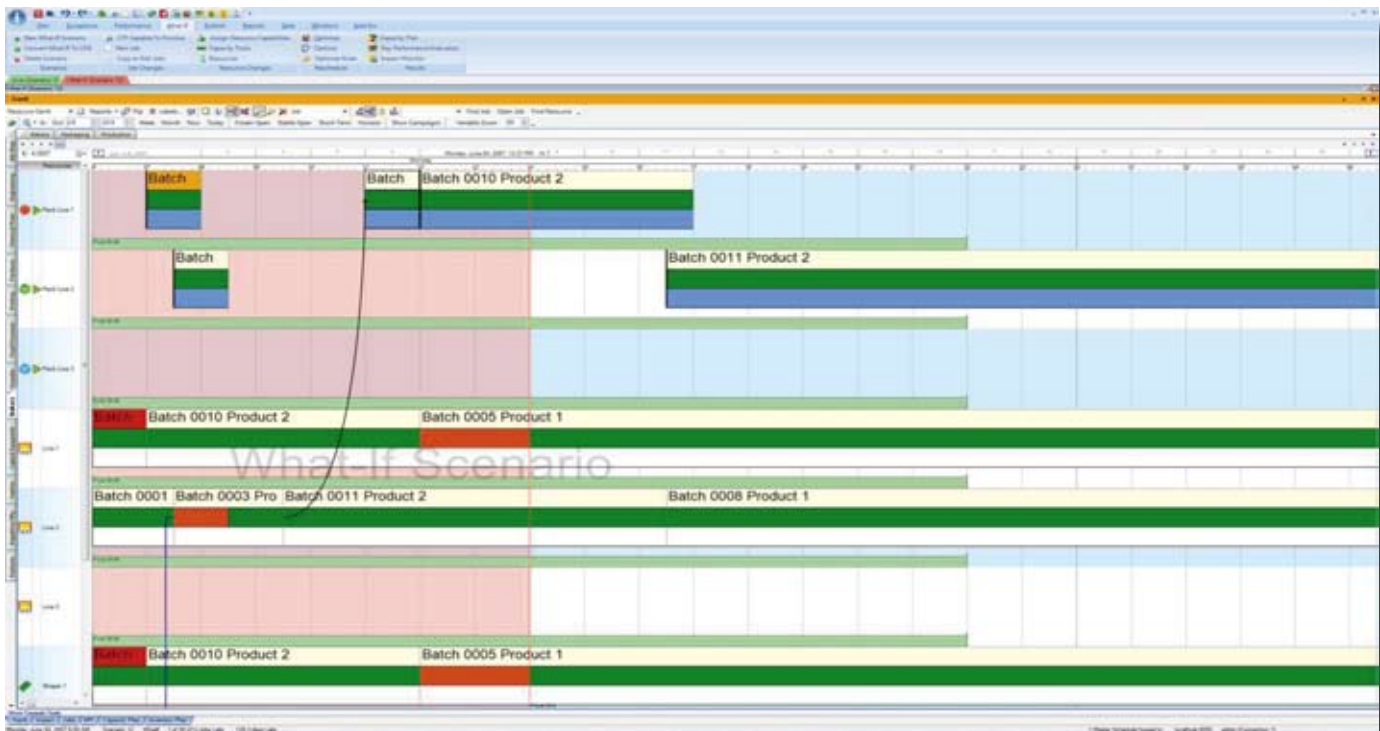
Designed by and for sales professionals, the user interface is intuitive, yielding high user acceptance and a short implementation cycle. The software can be installed on the same server with O2 Food ERP or on a separate machine for larger implementations.

## Forecasting

O2 Food ERP brings forecasting technology together with dynamic inventory policy simulations. O2 Food ERP makes it easy to experiment with alternative supply strategies and see the effect on service and projected inventories immediately.



Amount Per Serving	
Calories 260	Calories from Fat 120
Serving Size 1 cup (228g) Servings Per Container 2	
Amount Per Serving	
Total Fat 13g	20%
Saturated Fat 5g	25%
Trans Fat 2g	
Cholesterol 30mg	10%
Sodium 660mg	28%
Total Carbohydrate 31g	10%
Dietary Fiber 0g	0%
Sugars 5g	
Protein 5g	
Vitamin A 4%	Vitamin C 2%
Calcium 15%	Iron 4%
*Percent Daily Values are based on a diet of other people's secrets. Your daily values may be higher or lower depending on your unique habits.	
Total Fat	Less than 2,000 2,500
Sat Fat	Less than 65g 80g
Cholesterol	Less than 300mg 300mg
Sodium	Less than 2,400mg 2,400mg
Total Carbohydrate	Less than 300g 375g
Dietary Fiber	25g 30g
Calories per gram:	
Fat 9	Carbohydrate 4 Protein 4





## Landed Costs

The Landed Costs Module allows you to combine actual shipping, handling, and import fees costs into the total cost of goods helping you manage profitability. You'll also be able to more effectively record actual costs incurred in acquiring goods by including duty, freight, and insurance (many times entered after the fact) as well as capture additional costs incurred later, such as destination fees and freight (often used in the valuation of inventory).

Streamline your procedures and correctly update inventory values by using multiple allocation methods including; by weight, volume, per unit, extended amount, and equal pars per line. Landed costs are automatically allocated to inventory goods received and then posted according to a specific project, avoiding duplicate, manual entries.

## Material Requirements Planning (MRP)

MRP is integrated with finite scheduling to provide a true closed loop system, which utilizes actual demand and transaction data from sales orders, purchase orders, inventory management, and work orders. It also provides integration with demand forecasts for items based on advanced replenishment rules and formulas, thus enabling more accurate material plans by item. Planners have total control over generation criteria including start and stop dates, planning bucket sizes, and a demand time fence. Multiple MRP versions provide greater flexibility and simulation/comparison capabilities. MRP may be instantly accessed for material data from sales orders, purchase orders, work orders, and inventory.

## Enterprise Asset Management

Enterprise Asset Management speeds the information flow between the enterprise business system and the maintenance department to accelerate performance and help you achieve maintenance excellence.

*"All I ask of food is that it doesn't harm me."*

*- Michael Palin  
(Monty Python's Flying Circus)*



# Mobile Warehouse

## Purchase Order Receiving

Increase the accuracy, speed and effectiveness of your receiving department with the Mobile Warehouse. By utilizing Smart-Barcode™ technology your employees will learn in minutes, how to perform the receiving function. With a couple scans from a barcode reader, your inventory will be received, compared to the purchase order in O2 Food ERP, validated against the receiving rules that you have defined and labels printed with any information you wish.



By empowering your receiving personnel to enter inventory receipts at the dock, you will have faster, more accurate inventory information of raw materials, better communication with production planning and scheduling functions and more timely information for material purchase planning.

## Warehouse/Bin Movements

Knowing specifically where your inventory is located within your organization is essential to effective inventory management. For companies that manage lot tracked items and/or expiration dates of materials, this information becomes critical. Historically, capturing this information has been prohibited by cost; both human-capital and dollars, slowness by which transactions are updated and the ability of systems to handle the transactions.

With Mobile Warehouse and Smart-Barcode™ technology, bin movements within a location is as simple as scanning a couple barcodes. Warehouse employees will adopt the process change easily because the process doesn't significantly interfere with their normal duties. They will embrace the change the first time they are able to find missing inventory by querying the barcode scanner to get the precise location.

## Process Manufacturing

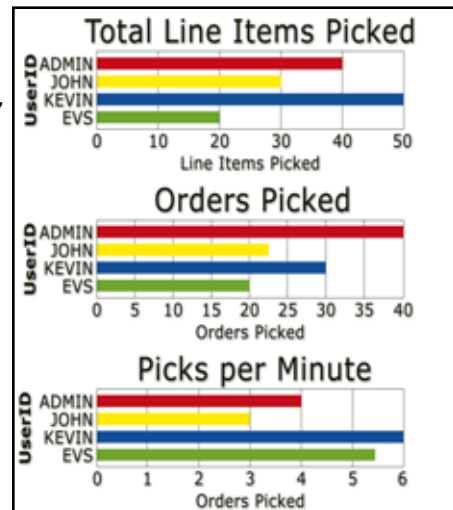
Process manufacturing generally has complex requirements in the warehouse environment. Warehouse personnel may have to manage inventory lots, expiration dates, hazardous materials, quality control release/quarantine, etc. Mobile Warehouse was specifically designed to enable material handlers to effectively and easily manage these inventory complexities.

This module, in conjunction with the Process Manufacturing module of O2 Food ERP allows your to create production pick tickets based on rules you define, FEFO (first-expire, first out), oldest lot, single lot picking, etc. and either request or require your material handlers to pick these lots. Do you allow your material handlers to determine the material to pick? No problem, Mobile Warehouse can tell your material handlers what item to pick, where the items reside in your plant and allow them to choose the appropriate lots.

As materials are produced and potentially put on pallets or in containers, Mobile Warehouse can allow your material handlers to enter quantities produced for the batch, identify the pallet/container that they are on and track that pallet/container throughout your warehouse.

## Sales Order Shipping/Picking

Sales order picking is a powerful and flexible function within Mobile Warehouse and O2 Food ERP. The warehouse management function of O2 Food ERP allows complex rules to determine what should be picked, where from, and how much. The Mobile Warehouse will communicate the desired picks to your material handlers who will know exactly where in the warehouse the inventory resides. If you track inventory on containers or pallets, material handlers can load a pallet, homogeneous item, mixed items, mixed lots, etc. and stage the pallet for shipping. With Mobile Warehouse and Smart-Barcode™ technology, shipping is as simple as a couple scans; shipping documents are printed, and O2 Food ERP is immediately updated for the shipment.



## Physical and Cycle Counts

Increase the speed and accuracy of your physical counts while minimizing the effort and costs to capture the required data with Mobile Warehouse with Smart-Barcode™ technology.





Escape Velocity Systems, Inc.  
2520 55th Street, Suite 204  
Boulder, CO 80301

303-494-1765  
[www.evs-sw.com](http://www.evs-sw.com)