

## O2 Milling ERP




Escape Velocity Systems



*Elevate* Performance,  
Productivity & Profitability  
with

*O2 Milling ERP*



Today's mills are a blend of science and ingenuity; serious businesses competing in an environment fueled by extremely volatile commodity and transportation costs. Ever-increasing customer demands require a level of operational visibility that not only includes current data, but gives a glimpse of the future. As a mill grows and expands, manual, paper, and spreadsheet-driven processes don't keep up with the information needs from across many departments and functions. Fortunately there is a solution. O2 Milling ERP is a complete enterprise management solution tailor-made for growing mills. O2 Milling ERP's industry-specific feature set, based on MAS 500 helps mills manage their entire operations with insight; the competitive advantage that can make the difference between surviving and thriving.

# *Milling Industry Business Issues*

## **Focused on Industry Challenges**

Mills often experience the challenges of competition, highly variable material costs and quality management issues. To succeed, you need clear, accurate and timely visibility across your whole enterprise; from sales and production to purchasing and inventory control. Real-time access to information from all corners of your organization will help you keep your finger on the pulse of your company.

Escape Velocity Systems understands the needs of mills are unique and require a great understanding of customer demands, inventory chemistry, cost management and quality controls. Inherent in the O2 Milling ERP is an understanding that comes from years of industry expertise developing tools and real solutions that have helped mills realize a competitive advantage.

Where you are today, where you're going tomorrow, Escape Velocity Systems is uncompromising in its commitment to be your business partner for life.



*"Improving integration between applications is one of the top priorities for organizations today."*

*- Forrester survey of more than 600 technology decision makers and enterprises across North America*



## *Costs, Profitability, & Customer Satisfaction*

- Least Cost Solving
- Material Chemistry
- “What-if” Cost Analysis
- Flexible Customer and Material Pricing

Managing costs, profits and customer satisfaction is a continuing challenge for mills; the O2 Milling ERP helps you manage and continually address these challenges.

Low margins and often highly fluctuating material costs make managing profitability a must for mills. O2 Milling ERP offers lot-based inventory chemistry and least cost solving for maximizing product margins by minimizing costs. In addition, “What-if” cost-analysis allows you to understand the impact of raw material costs as they relate to your finished products. Improve your bottom-line with better visibility throughout the entire budget, planning and analysis process.

Whether you purchase virgin material or scrap, purchase by ore weight or contained weight, the O2 Milling ERP provides complete inventory costing developed specifically for your industry. Make more informed decisions and improve profitability with insight into your material costing and pricing.



## *Production Efficiency & Inventory Management*

- Inventory Lot Chemistry
- Least Cost Solving
- Material Substitutions
- Capacity Resource Scheduling

Daily challenges of a mill are numerous and complex with ever changing operational capacity scheduling, material substitutions, elemental recovery and ingredient variability.

O2 Milling ERP understands the complex and unique inventory requirements of a mill. Effective inventory management requires an ability to know material chemistry, manage product and ingredient specifications and record quality control readings. To make inventory management reporting more efficient, O2 Milling ERP provides Business Intelligence tools for powerful, flexible and graphical management reporting.

The O2 Milling ERP operates the way you do and offers robust tools to help manage your operations. O2 Milling ERP helps mills maximize production efficiency with an ability to determine least cost to heat, substitute materials “on-the-fly,” and evaluate the effect of the substitution on product specifications. Production line constraints are common bottle-necks in any milling environment; O2 Milling ERP provides finite capacity scheduling to optimize production schedule based capacities and constraints of your plant.



## *Specification Management, Compliance & Quality Control*

- Product Target Specification
- Cradle to Grave Heat Tracking
- Quality Control

Customers insist on high product and delivery standards from your company. The O2 Milling ERP was developed to easily satisfy the high standards you require.

Too often mills maintain information in multiple locations (or “islands”); i.e. specifications in Excel, quality control tests in Microsoft Access, production scheduling on a white board, and least cost solving in a third party application. This separation of information requires significant and error prone manual tasks and limits communication between the “islands.” The O2 Milling ERP was developed to centralize information from all aspects of your organization and provide real-time information to all functions of your company.



# O2 Milling ERP Solution

## Quality Control

With the Quality Control module you can define a battery of tests to perform for purchased materials or manufactured products and set the acceptable range for the tests. If a test fails, the lot can be placed on hold. A “work queue” can be used to help alert quality control personnel of products which need to be tested and automatically generate a test schedule for production batches.

## Least Cost Solving

The O2 Milling ERP Least Cost Solver ensures maximum profit on your manufactured items by determining the least cost of existing ingredients to achieve product specifications. The Least Cost module works with material lot chemistry and formula specifications to provide a comprehensive tool for improving efficiency and minimizing heat costs for your manufacturing runs.

## Formula Management

O2 Milling ERP combines powerful formulation and analysis with formula management capabilities such as formula group security and an R & D notebook. The formulation module takes full advantage of the strong physical property module. With O2 Milling ERP, you can formulate to multiple specifications, performing many complex calculations quickly and accurately, eliminating the need for complex and mistake-prone spreadsheets.

## Production

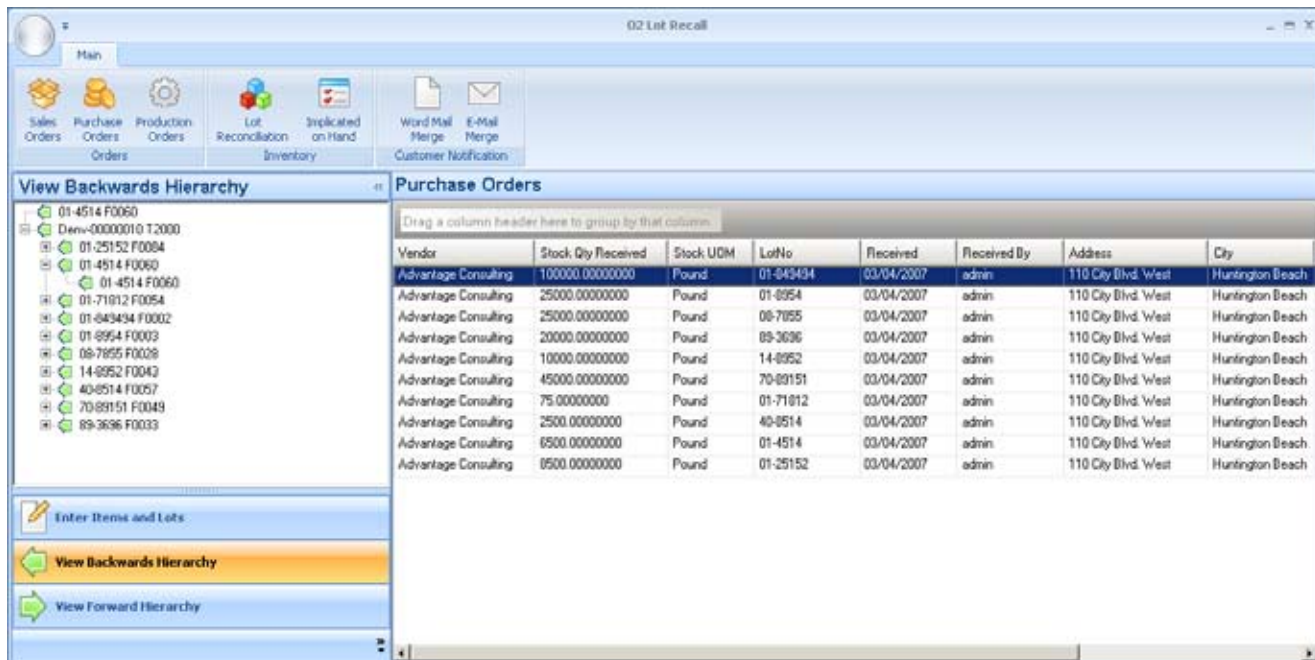
The Productions module provides powerful operational and analytic tools to help process manufacturers maximize efficiency and intuitively analyze historical operations. Whether you produce complete batches, require finished goods to ship before a batch is closed or operate in a “continuous flow” environment, O2 Milling ERP can easily facilitate your manufacturing method. The “Active Role Interface” is a completely customizable workbench which provides a powerful tool to manage your operational schedule.

## Cost Set Scenarios

The Cost Set Scenarios module for O2 Milling ERP allows users to perform “what-if” analysis on raw material costs then see their effect on the cost of finished goods and intermediates. With each scenario, the expected impact of the cost change on finished goods can be determined. Simplify the entry process by utilizing a linked Excel spreadsheet. When done, simply click “import” and your cost set will be updated in O2 Milling ERP. The Cost Scenarios module can also be utilized to roll up costs to other inventory buckets such as replacement cost and landed cost.

## Compliance Reporting

For many process manufacturers, compliance reporting such as MSDS are a legal requirement. The Compliance Reporting module is a dynamic reporting solution designed for the complex demands of your organizations federally regulated requirements. With the Compliance Reporting module, you will save time and money by enabling your organization to quickly and accurately generate compliance reports, streamlining the compliance reporting process, eliminating duplication of entry and maintaining a seamless workflow.



## Advanced Planning & Scheduling

Advanced Planning & Scheduling module has the ability to take an unlimited number of constraints into account and automatically alert planners to any violation. The Microsoft.Net architecture allows for easy addition of custom constraints unique to your business for production of schedules that respect your real-world requirements. The result is maximum production output, reduced time lost to cleanouts and a planning process that is easy to manage.

## EDI

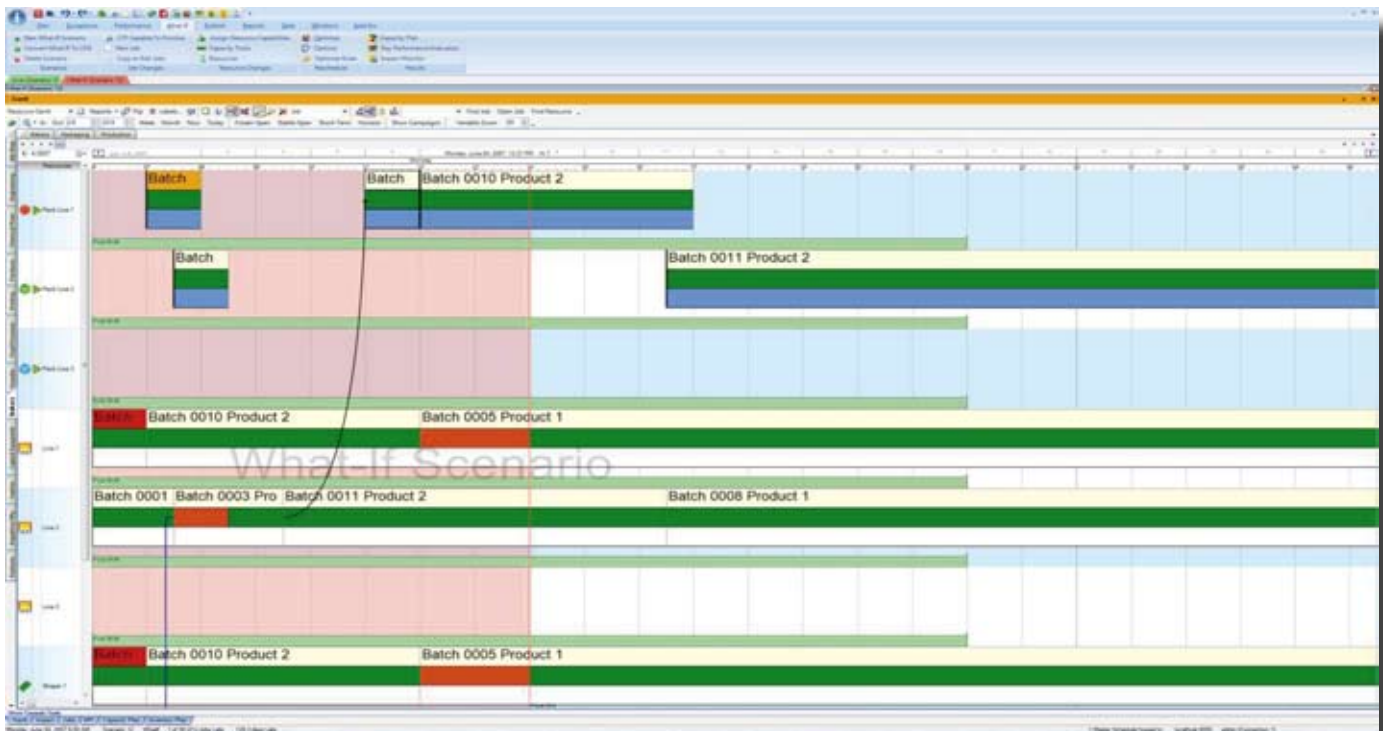
O2 Milling ERP offers more than just EDI integration software or network services. A modular approach enables O2 Milling ERP to provide a comprehensive yet flexible EDI solution that delivers unparalleled scalability.

## Sales Forecasting

O2 Milling ERP brings sales forecasting technology together with dynamic inventory policy simulations. O2 Milling ERP makes it easy to experiment with alternative supply strategies and see the effect on service and projected inventories immediately.

## Royalties & Rebates

The Royalties/Rebates module provides the ability to automate royalties, rebates, field development, slotting fees, customer refunds or any other paid fee based on O2 Milling ERP orders. O2 Milling ERP customers can set up relationships between items, vendors, and customers in one maintenance screen. The end result is to create an automated payable transaction to the vendor. This eliminates the need for "offline" spreadsheets to calculate what is owed to vendors and saves significant time at period-end.





## Landed Costs

The Landed Costs module allows you to combine actual shipping, handling, and import fees costs into the total cost of goods helping you manage profitability. You'll also be able to more effectively record actual costs incurred in acquiring goods by including duty, freight, and insurance (many times entered after the fact) as well as capture additional costs incurred later, such as destination fees and freight (often used in the valuation of inventory).

Streamline your procedures and correctly update inventory values by using multiple allocation methods including; by weight, volume, per unit, extended amount, and equal parts per line. Landed costs are automatically allocated to inventory goods received and then posted according to a specific project, avoiding duplicate, manual entries.

## Material Requirements Planning (MRP)

MRP is integrated with finite scheduling to provide a true closed loop system, which utilizes actual demand and transaction data from sales orders, purchase orders, inventory management, and work orders. It also provides integration with demand forecasts for items based on advanced replenishment rules and formulas, thus enabling more accurate material plans by item. Planners have total control over generation criteria including start and stop dates, planning bucket sizes, and a demand time fence. Multiple MRP versions provide greater flexibility and simulation/comparison capabilities. MRP may be instantly accessed for material data from sales orders, purchase orders, work orders, and inventory.

## Enterprise Asset Management

Enterprise Asset Management speeds the information flow between the enterprise business system and the maintenance department to accelerate performance and help you achieve maintenance excellence.



# Mobile Warehouse

## Purchase Order Receiving

Increase the accuracy, speed and effectiveness of your receiving department with the Mobile Warehouse. By utilizing Smart-Barcode™ technology your employees will learn in minutes, how to perform the receiving function. With a couple scans from a barcode reader, your inventory will be received, compared to the purchase order in O2 Milling ERP, validated against the receiving rules that you have defined and labels printed with any information you wish.



By empowering your receiving personnel to enter inventory receipts at the dock, you will have faster, more accurate inventory information of raw materials, better communication with production planning and scheduling functions and more timely information for material purchase planning.

## Warehouse/Bin Movements

Knowing specifically where your inventory is located within your organization is essential to effective inventory management. For companies that manage lot tracked items and/or expiration dates of materials, this information becomes critical. Historically, capturing this information has been prohibited by cost; both human-capital and dollars, slowness by which transactions are updated and the ability of systems to handle the transactions.

With Mobile Warehouse and Smart-Barcode™ technology, bin movements within a location is as simple as scanning a couple barcodes. Warehouse employees will adopt the process change easily because the process doesn't significantly interfere with their normal duties. They will embrace the change the first time they are able to find missing inventory by querying the barcode scanner to get the precise location.

## Process Manufacturing

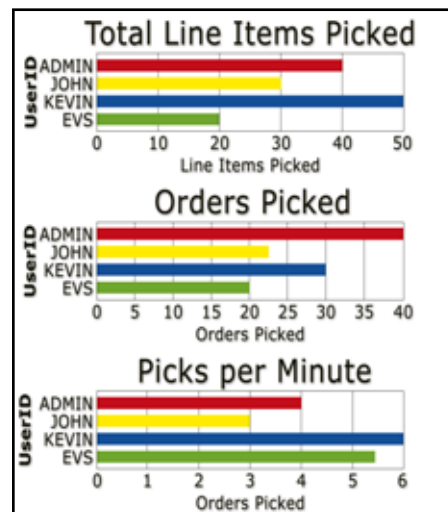
Process manufacturing generally has complex requirements in the warehouse environment. Warehouse personnel may have to manage inventory lots, expiration dates, hazardous materials, quality control release/quarantine, etc. Mobile Warehouse was specifically designed to enable material handlers to effectively and easily manage these inventory complexities.

This module, in conjunction with the Process Manufacturing module of O2 Milling ERP allows your to create production pick tickets based on rules you define, FEFO (first-expire, first out), oldest lot, single lot picking, etc. and either request or require your material handlers to pick these lots. Do you allow your material handlers to determine the material to pick? No problem, Mobile Warehouse can tell your material handlers what item to pick, where the items reside in your plant and allow them to chose the appropriate lots.

As materials are produced and potentially put on pallets or in containers, Mobile Warehouse can allow your material handlers to enter quantities produced for the batch, identify the pallet/container that they are on and track that pallet/container throughout your warehouse.

## Sales Order Shipping/Picking

Sales order picking is a powerful and flexible function within Mobile Warehouse and O2 Milling ERP. The warehouse management function of O2 Milling ERP allows complex rules to determine what should be picked, where from, and how much. The Mobile Warehouse will communicate the desired picks to your material handlers who will know exactly where in the warehouse the inventory resides. If you track inventory on containers or pallets, material handlers can



load a pallet, homogeneous item, mixed items, mixed lots, etc. and stage the pallet for shipping. With Mobile Warehouse and Smart-Barcode™ technology, shipping is as simple as a couple scans; shipping documents are printed, and O2 Milling ERP is immediately updated for the shipment.

## Physical and Cycle Counts

Increase the speed and accuracy of your physical counts while minimizing the effort and costs to capture the required data with Mobile Warehouse with Smart-Barcode™ technology.





Escape Velocity Systems, Inc.  
2520 55th Street, Suite 204  
Boulder, CO 80301

303-494-1765  
[www.evs-sw.com](http://www.evs-sw.com)